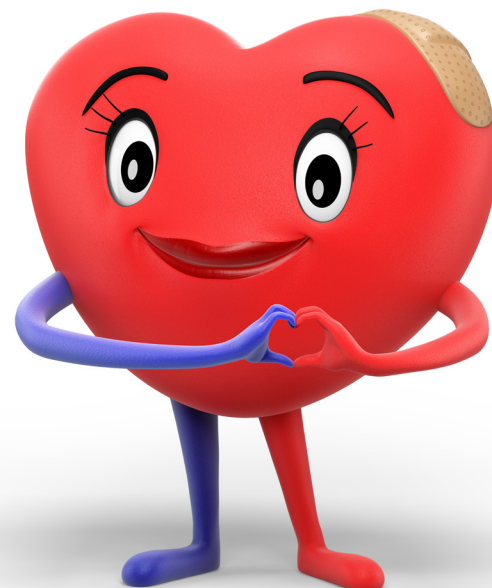


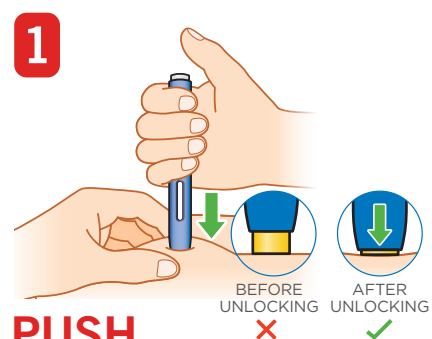
GET TO KNOW YOUR SureClick® AUTOINJECTOR

When you're prescribed an Autoinjector, you might not know what to expect. The ready-to-use SureClick® Autoinjector was designed for simple at-home use. This resource may help with questions about using the SureClick® Autoinjector.



Important: This resource is intended to provide you with an overview and basic information about the SureClick® Autoinjector and does not replace the Instructions for Use. Please review the Instructions for Use included with your prescribed medication with your doctor prior to performing your injection. If you have further questions, please contact your doctor.

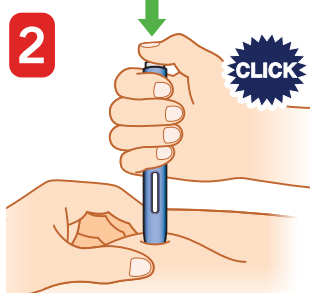
KEY INJECTION STEPS



PUSH

the Autoinjector firmly down onto the skin until the **YELLOW** safety guard stops moving.

This unlocks the gray start button.



PRESS

the start button; you will hear a **CLICK**. **KEEP HOLDING** the Autoinjector down.



WATCH & CONFIRM

the window is fully **YELLOW**. It is okay to lift your thumb. It takes about 15 seconds to complete. **Then you're done!**

Remember: You **MUST** unlock the Autoinjector by firmly pushing into your skin **WHILE** pressing the start button to perform the injection.

Approved Use

What is Repatha®?

Repatha® is an injectable prescription medicine used:

- To reduce the risk of major adverse cardiovascular (CV) events, such as death from cardiovascular disease, heart attack, stroke, certain types of chest pain conditions (unstable angina) requiring hospitalization, or certain types of heart surgery, in adults with cardiovascular disease.
- along with diet alone or together with other cholesterol-lowering medicines in adults with high blood cholesterol levels called primary hyperlipidemia (including a type of high cholesterol called heterozygous familial hypercholesterolemia [HeFH]) to reduce low density lipoprotein (LDL) or bad cholesterol.

Important Safety Information

Do not use Repatha® if you are allergic to evolocumab or to any of the ingredients in Repatha®.

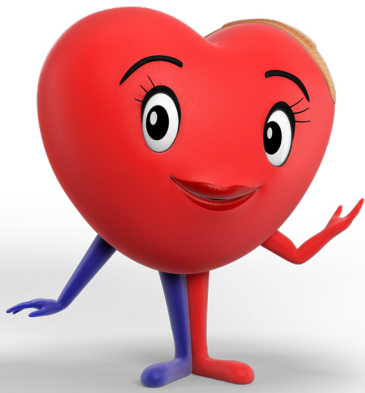
Before you start using Repatha®, tell your healthcare provider about all your medical conditions, including if you are allergic to rubber or latex, are pregnant or plan to become pregnant, or are breastfeeding or plan to breastfeed. Repatha® is available as prefilled single-dose SureClick® autoinjectors and prefilled single-dose syringes that either contain dry natural rubber (a derivative of latex) in the needle cover or are not made with natural rubber latex. The carton and "Instructions for Use" will state if your prefilled single-dose SureClick® autoinjector or prefilled single-dose syringe contains dry natural rubber. The single-dose Pushtronex® system (on-body infusor with prefilled cartridge) is not made with natural rubber latex.

Tell your healthcare provider or pharmacist about any prescription and over-the-counter medicines, vitamins, or herbal supplements you take.

Please see additional Important Safety Information on the next page.

 **Repatha®**
(evolocumab) injection
140 mg/mL

SureClick®
Autoinjector



INJECTION RESOURCES FOR YOU

Are you getting started at home? Feel confident in knowing you have supplemental injection support online, on the phone, or at home.



Instructions for Use

You can find the Instructions for Use at repatha.com/injection



Injection Overview Video

Hold your smartphone camera over the QR code to access the overview video, or find it at repatha.com/injection



Website

Online support is available to you. Visit repatha.com/injection



Live Support

We're here for one-on-one live support.
Call 1-844-REPATHA (1-844-737-2842) 8AM-8PM ET, Mon-Fri



Help From Your Doctor

If you have further questions, please contact your doctor.
Call or email questions to:

NAME

PHONE

EMAIL



Important Safety Information (cont'd)

What are the possible side effects of Repatha®?

Repatha® can cause serious side effects including serious allergic reactions. Stop taking Repatha® and call your healthcare provider or seek emergency help right away if you have any of these symptoms: trouble breathing or swallowing, raised bumps (hives), rash or itching, swelling of the face, lips, tongue, throat or arms.

The most common side effects of Repatha® include: runny nose, sore throat, symptoms of the common cold, flu or flu-like symptoms, back pain, high blood sugar levels (diabetes) and redness, pain, or bruising at the injection site.

Tell your healthcare provider if you have any side effect that bothers you or that does not go away.

These are not all the possible side effects of Repatha®. Ask your healthcare provider or pharmacist for more information. Call your healthcare provider for medical advice about side effects.

You are encouraged to report negative side effects of prescription drugs to the FDA. Visit www.fda.gov/medwatch, or call 1-800-FDA-1088.

Click here for full [Prescribing Information](#), including [Patient Product Information](#), and [Instructions for Use](#).



© 2025 Amgen Inc.
All rights reserved. Not for Reproduction. USA-CCF-82100 01/25

